

S & M 0840

DNA-Mediated Sensitive Detection and Quantification of Rare Earth Ions Using Polymerase Chain Reaction

Ken Yokawa¹, Takashi Kadono^{1,2}, Yusuke Suzuki¹,
Takuya Suzuki¹, Kazuya Uezu¹ and Tomonori Kawano^{1,*}

¹Faculty and Graduate School of Environmental Engineering,
The University of Kitakyushu, Kitakyushu, 808-0135, Japan

²Fukuoka Industry, Science and Technology Foundation, Kitakyushu, 808-0135, Japan

(Received October 1, 2010; accepted November 16, 2010)

Key words: biosensing, DNA, lanthanum PCR, rare earth, real-time PCR

In this article, a novel approach to a highly sensitive and quantitative detection of rare earth ions by the polymerase chain reaction (PCR) technique is described, by focusing on the catalytic activities of rare earth ions towards deoxyribonucleic acid (DNA). The detection of rare earth ions is based on the observation that rare earth ions such as La³⁺ act against PCR-dependent amplification of DNA. In addition to the detection of rare earth ions by the conventional PCR protocol with agarose gel electrophoresis, we also quantified rare earth ions by real-time PCR. Finally, our approach using PCR greatly lowered the limit for the biochemical detection of rare earth ions at the ppb level.

1. Introduction

Our group has been engaged in studies of the biological sensing of various metal ions, chiefly trivalent cations of rare earth elements, using living cells of plants,^(1–3) microbes,⁽⁴⁾ and protozoa.⁽⁵⁾ Plant cells responded to the trivalent cation of aluminum similarly to that of rare earth elements.^(6–8) In addition to living cells, some *in vitro* systems consisting of biological components such as metal-binding peptides were employed for the detection of rare earth ions.⁽⁹⁾ The target metal ions used in our previous approaches include Na, Mg, Al, K, Ca, Sc, Mn, Fe, Co, Ni, Cu, Zn, Ga, Sr, Y, Ag, Cd, and In. Lanthanides such as La, Ce, Pr, Nd, Sm, Eu, Gd, Tb, Dy, Ho, Er, Tm, Yb, and Lu have also been our targets of interest. Through such continuous studies, we revealed that biological responses can be utilized as markers or sensors of metal cations.⁽¹⁰⁾ In most cases, the likely target molecules, to which rare earth ions bind, within the living cells are cation-permeable ion channels⁽³⁾ or respiratory burst oxidase homologues (RBOH) known as NADPH oxidases embedded within the plasma membrane;^(1,11) thus, biological membranes can be considered as one of the most important sites of actions of rare earth ions. In addition,

*Corresponding author: e-mail: kawanotom@env.kitakyu-u.ac.jp

other cell-free macromolecules, such as proteins (peptides) and nucleic acids, can be the putative targets of ion binding or interactions in order to develop reliable protocols for the detection of metal ions. The present article focuses on the development of novel protocols for the detection of metal ions in aqueous samples using deoxyribonucleic acid (DNA) as the sensing macromolecule.

Komiyama and his colleagues have shown that rare earth ions possess various biocatalytic activities. For example, La^{3+} , Pr^{3+} , and other rare earth ions catalyze the formation of 3'-5'-cyclic adenosine monophosphate (cAMP) from adenosine-5'-triphosphate (ATP) under physiological conditions.⁽¹²⁾ Furthermore, in cooperation with other metals, rare earth ions efficiently and nonenzymatically hydrolyze the phosphoester linkages in nucleic acids,⁽¹³⁾ thus leading to the degradation of DNA⁽¹⁴⁾ and ribonucleic acid (RNA).^(15,16) Therefore, DNA may be used as a probe for the detection of rare earth ions, through the observation of rare-earth-ion-dependent DNA degradation. However, the reported range of rare earth ion concentrations required for detectable DNA breakdown after agarose electrophoresis is approximately on the mM order (over *ca.* 100 ppm) which is not high enough to be used as a rare-earth-ion-sensing protocol.

Here, we attempted a novel DNA-based detection of rare earth ions on the ppb order, by employing and modifying the conventional polymerase chain reaction (PCR).⁽¹⁷⁾

2. Materials and Methods

2.1 Incubation of DNA with rare earth elements

Prior to PCR and/or electrophoresis on agarose gels, DNA dissolved in water or buffer (at various concentrations described in the result section) was incubated with various concentrations of rare earth ions (at 37°C for 1 h, unless indicated otherwise). The final concentrations of rare earth ions used for incubation with DNA are referred to when discussing the concentrations of rare earth ions required for DNA degradation or PCR inhibition.

2.2 Preparation and purification of template DNA sequence

For model PCR-based DNA amplification, a DNA fragment of 501 base pairs (bp) derived from pBR322 was amplified by PCR (Fig. 1). The primers used were gctgtaggcataggcttgg (forward) and cgactcctgcattaggaagc (reverse). PCR was performed as described below, using pBR322 as the template DNA. The resultant 0.5 kilobase (kb) amplicon (corresponding to the 501 bp sequence between the 137th and 638th bases in pBR322) was purified following agarose gel electrophoresis (by excising the 0.5 kb band and extracting the DNA). Then, the obtained DNA solution was used as the template for further PCR.

2.3 PCR conditions

PCR was performed using TaKaRa Ex Taq® (TaKaRa Bio Inc., Otsu, Japan). A 10 μL mixture of 0.5 kbp DNA and a rare earth element was amplified in a 50 μL PCR mixture in accordance with the manufacturer's instructions. The two primers (forward, gctgtaggcataggcttgg; reverse, cgactcctgcattaggaagc) used for model PCR demonstration

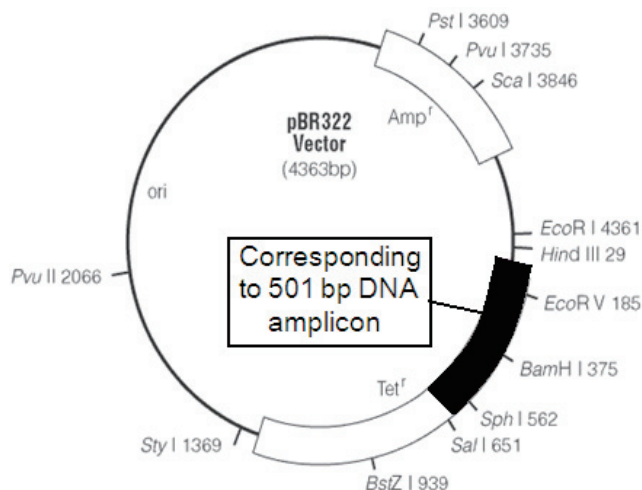


Fig. 1. Model DNA used for studying DNA-rare earth element interaction. From a commercially available plasmid pBR322, 501 bp (region between 137th and 638th bases) were amplified by PCR. The resultant amplicon was used as the template for further PCR. The map of pBR322 was obtained from the supplier's website (<http://www.promega.com>) and modified.

were identical to those used for preparing the template amplicon from pBR322. Thermal cycling conditions comprised an initial denaturation step at 94°C (2 min), followed by 25 cycles of annealing at 94°C (1 min), 59.5°C (1 min), and 72°C (1 min), and then an additional extension at 72°C (10 min) performed with the Program Temp Control System PC-320 (ASTECC, Fukuoka, Japan). Each PCR product was detected on 2% agarose gel.

2.4 Real-time PCR

Real-time PCR was performed using iQTM SYBR[®] Green Supermix (Bio-Rad, CA). A 10 µL mixture of 0.5 kbp DNA and a rare earth element was amplified in a 25 µL PCR mixture in accordance with the manufacturer's instructions. The specific primers used were the forward primer gctgtagcataggcttggt and the reverse primer cgactcctgattaggaagc. Thermal cycling conditions comprised an initial denaturation step at 95°C (1 min), followed by 25 cycles of annealing at 95°C (30 s), 59.5°C (30 s), and 72°C (40 s). Then, an additional extension at 72°C (5 min) was performed with CHROMO4 (Bio-Rad, CA). The amplification of each PCR product was optically monitored using Opticon Monitor version 3.0 (Bio-Rad, CA).

2.5 Rare earth samples

For the preparation of rare earth samples, chloride salts (LnCl₃) were dissolved in water and diluted to the required concentrations.

2.6 Sampling and analysis of natural waters

The water samples used as the sources of minerals (abundant ions possibly compete with rare earth ions) were a local tap water sample (Kitakyushu city tap water) and river water sample (Onga River, Fukuoka, Japan). For river water sampling, 5 different water catchments listed in limnological data base were selected.⁽¹⁸⁾ Within 12 h after sampling, a sample of approximately 10 mL was filtered with a cellulose acetate membrane filter (MILLIPORE, 0.22 μm) and kept at 5°C before measurement of ion concentrations. Ionic analyses were performed using an ion chromatograph (DX-120, Japan Dionex).

3. Results and Discussion

3.1 Preliminary DNA degradation assay

By simply incubating the DNA (0.5 kb PCR amplicon from pBR322, at 150 μM) with rare earth samples (LaCl_3 , TbCl_3 , and EuCl_3) at 37°C for 1 h, rare-earth-element-dependent degradation of DNA (bleaching of the corresponding band on agarose gel) was detectable, but only in the presence of high concentrations (3–30 mM) of rare earth elements (data not shown).

3.2 Inhibition of PCR-based DNA amplification by rare earth elements

Although the bleaching of DNA by rare earth ions (DNA-degradation activity) is detectable only in the presence of high concentrations of rare earth elements (as confirmed above), we expected that the bleaching of small amounts of DNA could be induced by a low concentration of rare earth ions. Therefore, we attempted to detect the interaction between DNA and rare earth elements at low concentrations after DNA amplification by PCR.

Figure 2 shows the results of DNA amplification (template DNA concentration, 150 pM) in the presence of La^{3+} , Eu^{3+} , Y^{3+} , and Tb^{3+} in the μM and sub- μM ranges. The concentrations of DNA and rare earth ions shown here correspond to the concentrations used in the template DNA degradation reaction at 37°C for 1 h. Compared with the positive control (with template DNA but without rare earth ions) showing the band corresponding to the 0.5 kb DNA amplicon on agarose gel, samples with rare earth ions showed inhibition of DNA amplification, possibly due to rare-earth-ion-catalyzed complete or partial degradation of template DNA. In the case of La addition, the inhibition of PCR was detectable in the presence of 1 μM La (ca. 139 ppb), and the band was no longer detectable in the presence of 10 μM La (Fig. 2(a)). Y and Eu completely inhibited PCR at 30 and 100 μM , respectively (Figs. 2(b) and 2(c)). Tb also showed a partial inhibitory effect at 100 μM (Fig. 2(d)).

The reproducibility of PCR inhibition by La under the above standard condition was examined by repeating the experimental process 8 times (Fig. 3). The concentration of La ions required for the complete inhibition of PCR was 4.75 μM (S.D, 0.43 μM). Since the reproducibility of the lanthanum-dependent inhibition of PCR was confirmed by conventional PCR, we concluded that a PCR-mediated protocol is applicable to the detection and quantification of low concentrations of lanthanum.

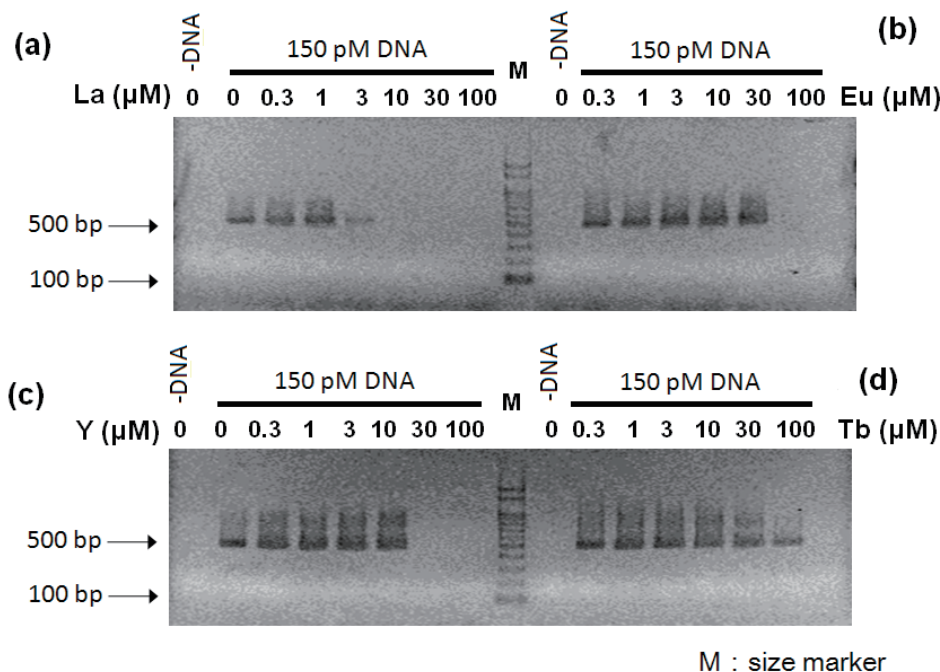


Fig. 2. Inhibition of PCR by rare earth elements. Template DNA (0.5 kb DNA derived from pBR322) at 150 pM was incubated with rare earth ions (0, 0.3, 1, 3, 10, 30, and 100 μM) and subjected to PCR and agarose gel electrophoresis. Effects of La (a), Eu (b), Y (c), and Tb (d) were compared.

3.3 La-dependent inhibition of PCR tested under various water conditions

For developing a reliable protocol for the detection of trace levels of rare earth ions in the environment, the effects of competing cations such as Na^+ , K^+ , Mg^{2+} , and Ca^{2+} and anions such as Cl^- and SO_4^- , which are abundant in natural water environments, must be examined. Therefore, we tested the effect of various water samples from the natural water environment as the solvent for La ions and DNA. Following the incubation of DNA and La ions in different water samples, PCR and agarose gel electrophoresis were performed (Fig. 4). The water samples used were, ultrapure water, local tap water (Kitakyushu city water), and river water samples (Onga River, Fukuoka, Japan). According to the limnological database documented by our group,⁽¹⁸⁾ river water samples can be categorized as upstream water (river water sample A), midstream water (river water samples B and C), and downstream water (river water samples D and E). The ionic composition of the water samples used are listed in Table 1. Among the samples, mineral contents were lower in river water samples A and B. The mineral compositions in the tap water sample were similar to those in the downstream water samples. In general, the contents of cations (Na^+ + K^+ + Mg^{2+} + Ca^{2+}) in these samples are *ca.* 320- to 490-fold higher at molar ratio and *ca.* 64- to 81-fold higher at weight ratio, than that of

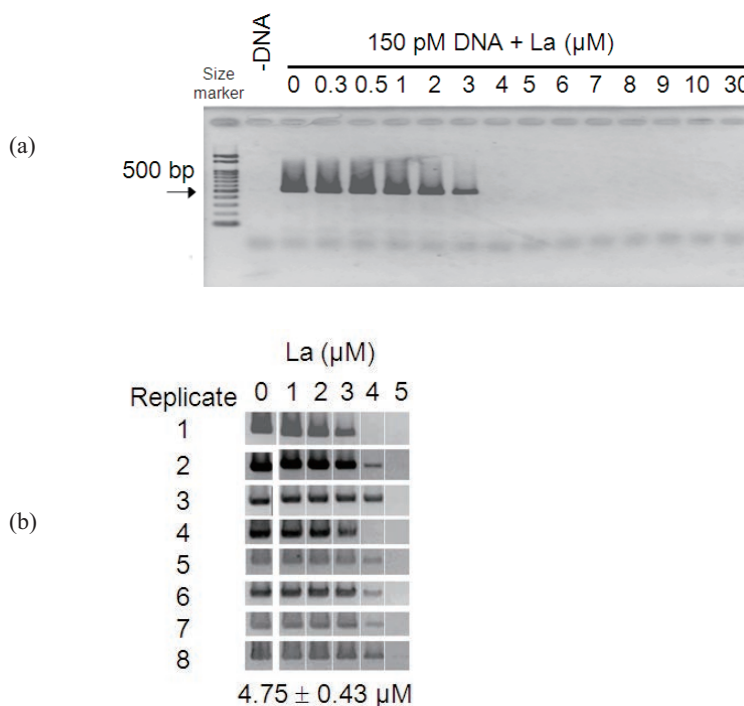


Fig. 3. Inhibition of PCR by lanthanum. Template DNA (0.5 kb DNA derived from pBR322) at 150 pM was incubated with La ions (0, 1, 2, 3, 4, and 5 μM) and subjected to PCR and agarose gel electrophoresis. (a) Typical result showing La-dependent inhibition of amplicon production by PCR in concentration-dependent manner. (b) Replication of La-dependent inhibition. The mean concentration of La required for complete inhibition of PCR was determined to be 4.75 μM (S.D. = 0.43 μM; $n = 8$).

La ions tested. Figure 4 shows that the inhibitory effect of La ions on PCR is insensitive to ions present in natural water samples. This suggests that our newly developed protocol is applicable to the detection of rare earth ions in the natural environment water samples containing abundant competing ions.

Although the above data suggest that the PCR-mediated rare earth ion detection protocol is highly specific to rare earth ions (compared with the ions of alkaline metals and alkali rare earth metals), the specificity of the detection protocol for each of the 16 rare earth elements is low at this moment. Therefore, we need to develop some additional preparation protocols to enhance the resolution or specificity for rare earth elements.

3.4 Quantification of lanthanum using real-time (quantitative) PCR

For the ease of the quantification of lanthanum, we used real-time PCR, which allows the kinetic analysis of DNA amplification by optically monitoring the increase in

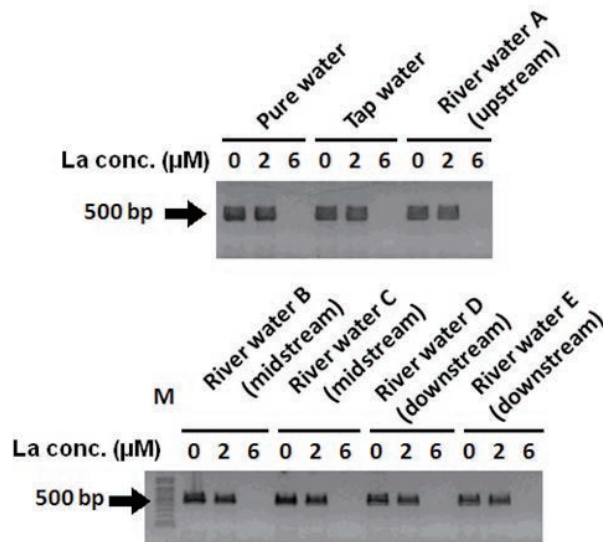


Fig. 4. Lanthanum-dependent inhibition of PCR performed for various water samples. Template DNA (0.5 kb DNA derived from pBR322) at 150 pM was incubated with La ions (0, 2, and 6 μM) in pure water or various water samples obtained from tap water or rivers, prior to PCR and agarose gel electrophoresis. Chemical (ionic) compositions of water samples used are listed in Table 1.

Table 1
Mineral compositions of water samples used for dissolving La ions.

Water samples	Mineral content (mg/L)					
	Na ⁺	K ⁺	Mg ²⁺	Ca ²⁺	Cl ⁻	SO ₄ ⁻
Pure water	N.D.	N.D.	N.D.	N.D.	N.D.	N.D.
Tap water (Kitakyushu City)	28.63	1.78	3.95	18.67	18.13	35.77
River water A (upstream)	8.12	0.96	1.74	6.47	4.34	4.77
River water B (midstream)	13.67	2.15	2.91	12.78	8.11	15.00
River water C (midstream)	58.40	2.11	4.48	24.33	16.77	55.75
River water D (downstream)	35.32	2.99	4.35	24.90	17.48	45.57
River water E (downstream)	29.44	2.90	3.68	22.01	13.92	35.90

The river water samples were from Onga River, Kyushu, Japan. N.D., not detectable

the concentration of the fluorescent probe (intercalator)-labeled double-stranded DNA amplicon (Fig. 5).

Although the linear relationship between fluorescence intensity and the concentration of La ions at the end point (38 cycles) was nominally detectable (data not shown), the yield of fluorescence and La concentrations showed a high linearity at 12, 14, and 16 cycles of PCR (Fig. 5). This indicates that automated quantification might be possible if the real-time PCR protocol was optimally modified, which remains as a future task.

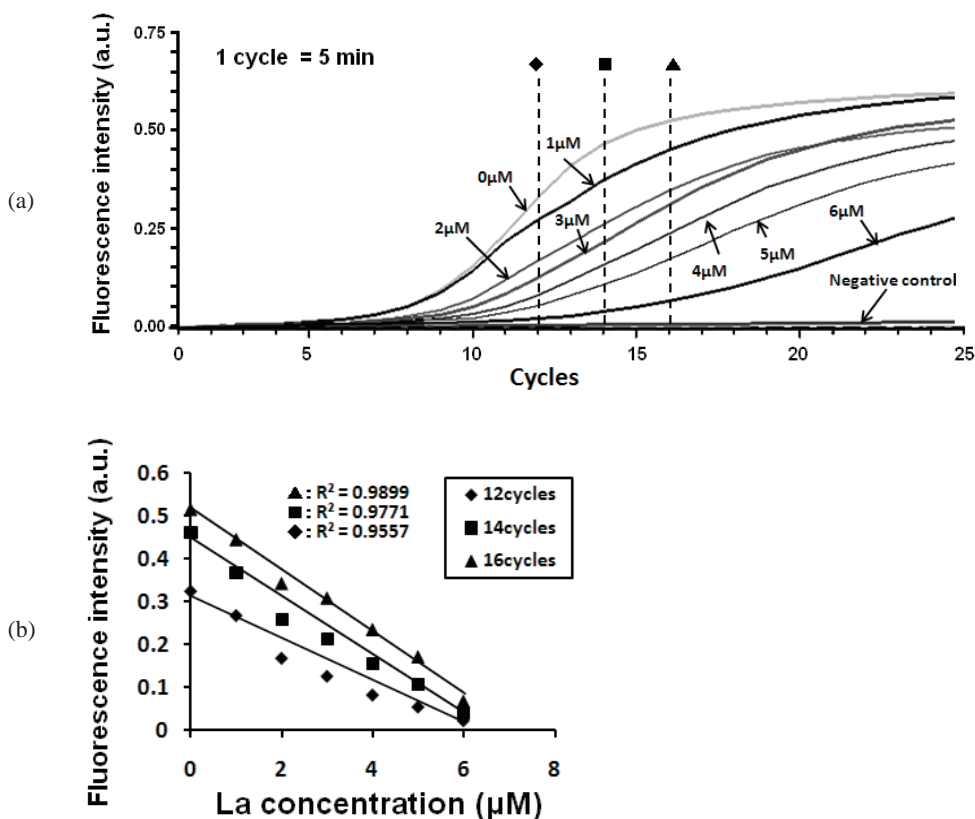


Fig. 5. Detection and quantification of lanthanide ions by real-time (quantitative) PCR. (a) Temporal profile of DNA amplification and its inhibition in the presence of various concentrations of La ions. (b) Relationship between La ion concentration and inhibition of PCR (dose-dependent decrease in DNA fluorescence intensity) analyzed at 12th, 14th, and 16th cycles of PCR.

3.5 Biphasic melting profiles of PCR amplicons

When performing the thermal melting profile analysis of end-products of real-time PCR (Fig. 6(a)), a La concentration-dependent decrease in the amount of the major amplicon and the emergence of a novel amplicon with a low-temperature melting profile (suggesting the presence of smaller fragments of DNA) were observed. Although the mechanism behind this phenomenon is unknown at present, the emergence of such unexpected amplicon(s) may be one of the key characteristics of the rare-earth-ion-dependent inhibition of PCR.

Interestingly, the emergence of unusual small amplicons was also observed on agarose gel. Figure 6(b) shows the cases of PCR demonstration with Tb and Eu. These data suggest that the novel fragments favor very narrow ranges of rare earth ion concentrations (thus they are not suitable for quantification, but help in the characterization of the lanthanide-dependent chemistry).

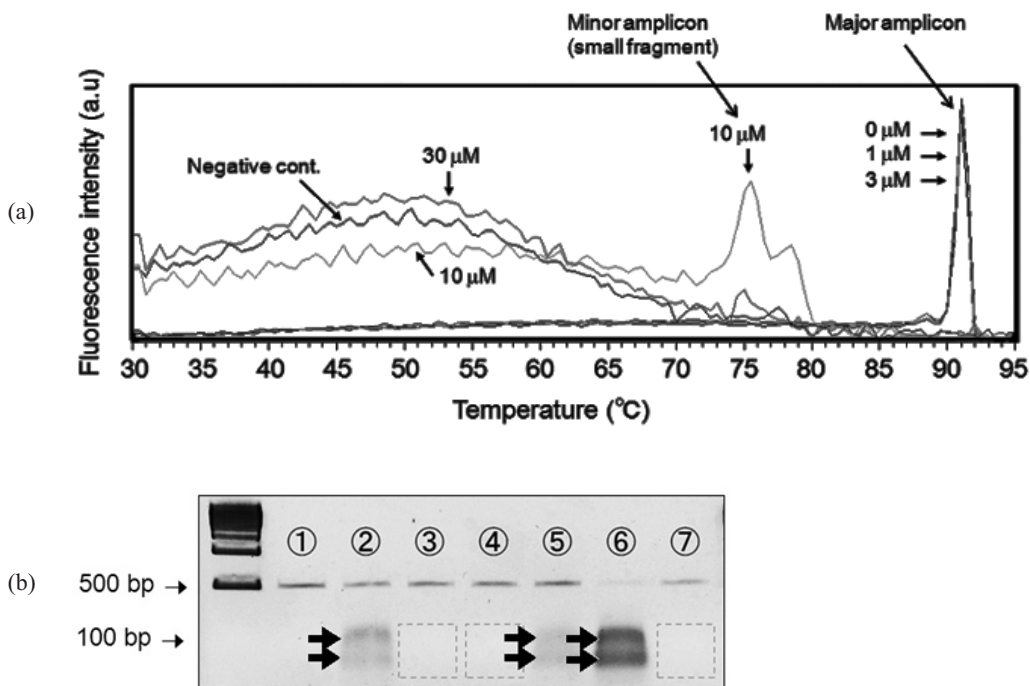


Fig. 6. Emergence of additional amplicons. (a) The melting profiles for DNA amplicons assessed with real-time PCR (melting profiles of DNA amplicons produced in the presence and absence of La ions). Two different amplicons with different melting profiles were determined. At a higher concentration of La ions (10 μM), the original amplicon found in the control was no longer detectable. Instead, an additional low-temperature-melting amplicon was found. (b) Emergence of secondary bands in the presence of rare earth elements in narrow concentration range. Lanes (1) 15 pM DNA only, (2) DNA + 0.3 nM Tb, (3) DNA + 3 nM Tb, (4) DNA + 30 nM Tb, (5) DNA + 0.3 nM Eu, (6) DNA + 3 nM Eu, (7) DNA + 30 nM Eu.

4. Conclusion

Our novel approach of employing PCR greatly lowered the limit for the biochemical detection of a variety of rare earth ions (enables detection of rare earth ions at the ppb level). Usually, to detect such trace concentrations of metals with high sensitivity, highly complex analytical instruments such as an inductively coupled plasma (ICP)-mass spectrometer are required; therefore, the initial cost of detecting such trace chemicals is very high. In contrast, the cost performance of our protocol is outstanding since the instrument required for our novel protocol for detecting rare earth ions is merely a thermal cycler (PCR machine). In addition, the quantification of rare earth ions present in aqueous solution by real-time PCR was demonstrated. The development of automated protocols for quantitative analyses of lanthanides with high sensitivity is highly encouraged for future study.

Acknowledgement

This work was supported by a grant from the Knowledge Cluster Initiative implemented by the Ministry of Education, Culture, Sports, Science and Technology (MEXT), Japan.

References

- 1 T. Kawano, N. Kawano, S. Muto and F. Lapeyrie: *Plant Cell Environ.* **24** (2001) 1235.
- 2 T. Kawano, N. Kawano, S. Muto and F. Lapeyrie: *Physiol. Plantarum* **114** (2002) 395.
- 3 C. Lin, T. Kadono, K. Yoshizuka, T. Furuichi and T. Kawano: *Z. Naturforsch.* **61c** (2006) 74.
- 4 R. Pinontoan, S. Krystofava, T. Kawano, I. C. Mori, F. Tsuji, H. Iida and S. Muto: *Biosci. Biotechnol. Biochem.* **66** (2002) 839.
- 5 M. Aonuma, T. Kadono and T. Kawano: *Z. Naturforsch.* **62c** (2007) 93.
- 6 T. Kawano, T. Kadono, T. Furuichi, S. Muto and F. Lapeyrie: *Biochem. Biophys. Res. Commun.* **308** (2003) 35.
- 7 T. Kawano, T. Kadono, K. Fumoto, F. Lapeyrie, M. Kuse, M. Isobe, T. Furuichi and S. Muto: *Biochem. Biophys. Res. Commun.* **324** (2004) 40.
- 8 C. Lin, Y. Yu, T. Kadono, M. Iwata, K. Umemura, F. Furuichi, M. Kuse, M. Isobe, Y. Yamamoto, M. Mastumoto, K. Yoshizuka and T. Kawano: *Biochem. Biophys. Res. Commun.* **332** (2005) 823.
- 9 T. Kawano: *ITE Lett.* **7** (2006) 383.
- 10 T. Kawano: *ITE Lett.* **4** (2003) 44.
- 11 T. Kawano, T. Kadono, S. C. Yang and S. Muto: Noncompetitive inhibition of lanthanide-induced oxidative burst by zinc in tobacco BY-2 cells: A chemiluminescent analysis in *Bioluminescence and Chemiluminescence Progress and Perspectives*, eds. A. Tsuji, M. Matsumoto, M. Maeda, L. J. Kricka, P. E. Stanley (World Sci. Publ. Co. Pte. Ltd., Singapore, 2005) p. 299.
- 12 H. Yajima, J. Sumaoka, S. Miyama and M. Komiyama: *J. Biochem.* **115** (1994) 1038.
- 13 M. Irisawa and M. Komiyama: *J. Biochem.* **117** (1995) 465.
- 14 M. Komiyama: *J. Biochem.* **118** (1995) 665.
- 15 M. Yashiro, A. Ishikubo and M. Komiyama: *J. Biochem.* **120** (1996) 1067.
- 16 K. Matsumura and M. Komiyama: *J. Biochem.* **122** (1997) 387.
- 17 K. B. Mullis and F. A. Faloon: *Methods Enzymol.* **155** (1987) 335.
- 18 S. Nishihama, A. Haraguchi, T. Kawano, K. Michiki, K. Nakazawa, T. Suzuki, K. Uezu and K. Yoshizuka: *Limnology* **9** (2008) 35.